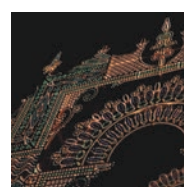
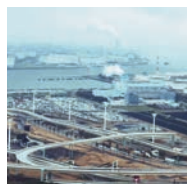
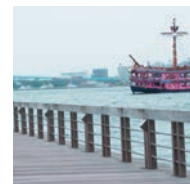


## Kobe Design University

As an international air and sea gateway,  
Kobe City has accepted various different cultures from around the world.  
In this cosmopolitan city of Kobe, Kobe Design University (KDU) fosters creators who can  
play important roles in society, as a venue for learning technology, art and design.  
New expressions and visions will carve out a new future.  
We propose global design from Kobe—



# Greeting from the President



Takahito SAIKI

"Enriching people's lives  
with design, and inspiring people  
through art"

The "Design and Art Revolution" of  
Kobe Design University

## Aspiring to become a world-class university

Ever since it was established in the cosmopolitan city of Kobe in 1989, Kobe Design University (KDU) has constantly striven to become a world-class university that educates and researches design and art to achieve the integration of "art & culture" and "science & technology."

## Eyes toward the world, Asia and the local community

In 2009, KDU was accredited as a member of Cumulus (the International Association of Universities and Colleges of Art, Design and Media), which currently consists of 226 members from 49 countries, and commenced collaboration with these design-related universities and colleges around the world. In April 2016, Kobe Design University will establish the KDU Comprehensive Research Organization in order to activate research in art and design. This organization will support interdisciplinary collaborative research by researchers within and outside the University, as well as industry-university collaboration, international collaboration, and funded research. The institutions of the new organization, including the Research Institute for Medical and Wellbeing, the Research Institute of Asian Design, the Interaction Design Institute, the Research Institute of Environment and Landscape Design, and the Amusement Media Laboratory, each of which has a set of research subjects, will try to create "knowledge and expressive skills of design" and disseminate their results both within Japan and overseas.

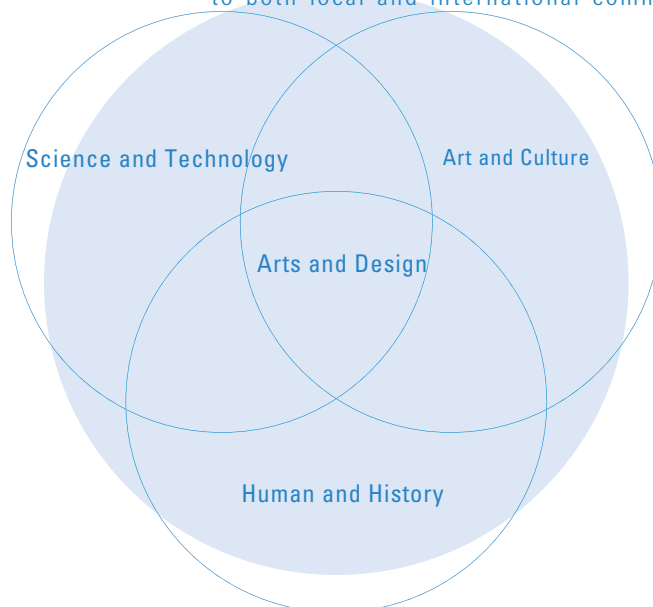
## Training designers, artists, and creators who will lead the future

Our approximately 100 full-time faculty members supporting this creative educational environment are top-level experts in their respective fields, who leverage their practical experience and extensive knowledge to build programs that transcend the borders of academic discipline to provide an education that nurtures future talent capable of conceiving, presenting and realizing innovation in response to the demands of society.

# "What is Arts and Design?"

## "What is Arts and Design?"

Kobe Design University pursues "Arts and Design" as a study based on human beings and the history of their activities, integrating science and technology with art and culture through design, and art-related academic activities. The field of "Arts and Design" which originated in Japan first emerged at the Kyushu Institute of Design (currently the School of Design of Kyushu University) in April 1968, aiming at "humanization of technology," as a response to various problems of pollution and human alienation observed during the high economic growth period. Today, more than four decades later, new issues, such as the globalization of information, changes in the urban environment, changes in the natural environment caused by global warming, and economic stagnation, have joined the universal challenges that academic activities related to Arts and Design are expected to address. The field of Arts and Design in today's living environment consists of visual design, fashion design, product design, and environmental design. Its mission is to create a living environment that is most suitable for humanity. Furthermore, Arts and Design activities in visual and media communication design, formative design and contemporary arts cannot be approached without a deep understanding of the natural environment, society, history and the specific culture. Moreover, Arts and Design also has the role of shaping the future society as it gains consensus from the society along the way. Here, one would find new demands of appropriate technology, as well as the key that suggests a future direction in present trends. Thus, in addition to employing cutting-edge scientific/technological capabilities in line with present circumstances and the power of formative expression, Arts and Design requires clairvoyance, imagination, and the ability to make decisions based on social ethics concerning people and their social lives. Arts and Design is a form of education and research that is comprehensively implemented throughout all the following processes; presentation of new ideas, investigation and conceptualization, planning and drawing up of designs, actual expression and shaping, and then marketing, practical use, maintenance and repair, and the remainder of the product's life cycle. KDU closely links these Arts and Design education and research topics with domestic and international design-related universities and local communities, thereby striving to become a university that contributes to both local and international communities.



# Kobe Design University

## Basic Principles

With its theme of the integration of science & technology and arts & culture, Kobe Design University upholds the following basic principles: 1) To offer courses on human, social and natural sciences, focusing on humanity and the history of human activities; 2) To improve students' artistic sensibilities and expressive techniques enhanced by a good education; and 3) To foster designers, artists, and creators who can help enrich human life and culture.

- ▶ Founded in: 1989
- ▶ Total area of campus: 114,139 m<sup>2</sup>
- ▶ Total floor area of campus buildings: 32,551 m<sup>2</sup>
- ▶ Number of students: 1,772 (1,722 undergraduates, 50 postgraduates)

- ▶ Number of faculty members: 298 (including 192 part-time members)
- ▶ Number of administrative staff members: 77 (including 17 part-time members) As of December 2015

## Parent Organization

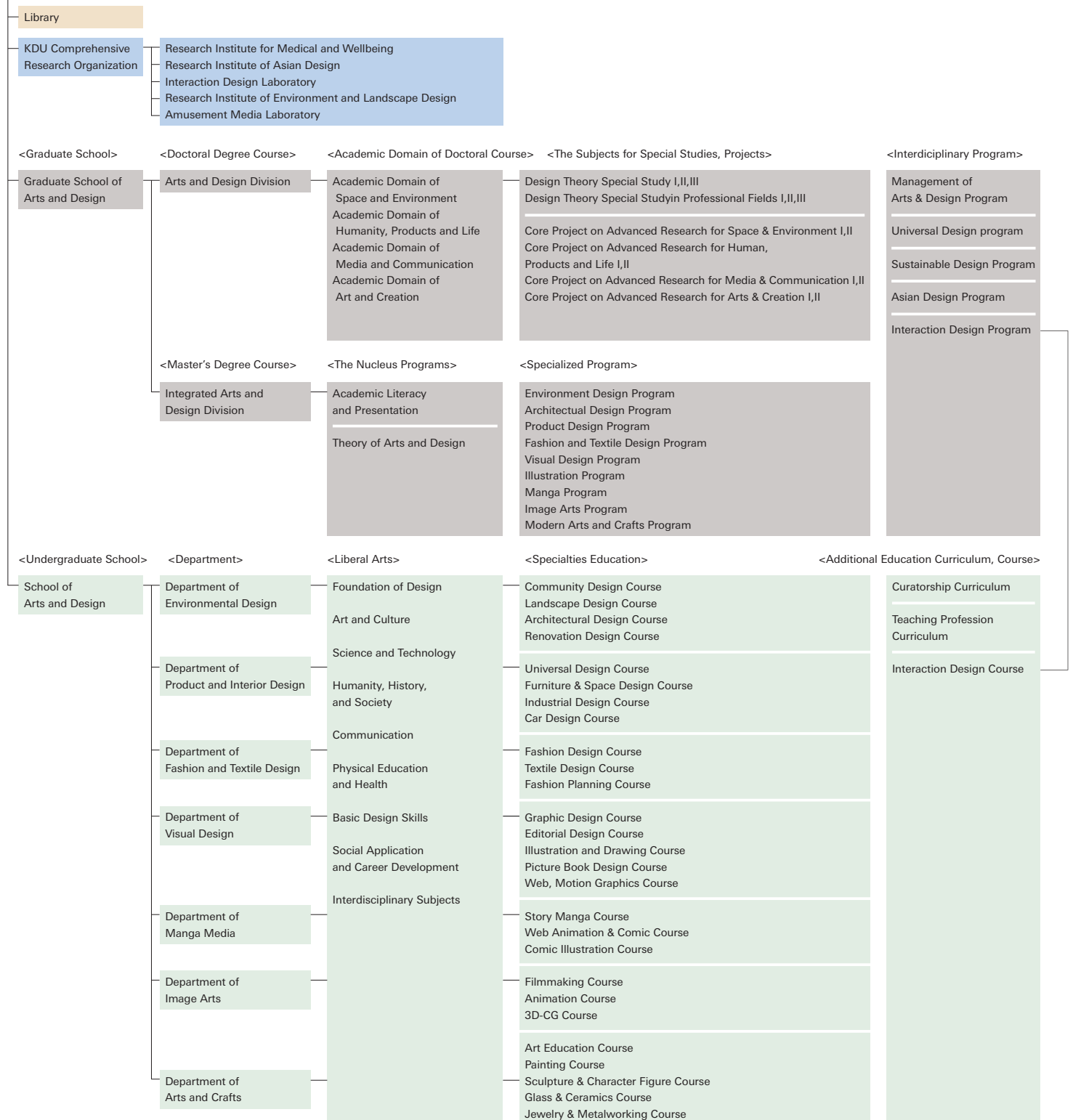
### Tanioka Gakuen Educational Foundation

#### Founding Philosophy

The founding philosophy of Kobe Design University is "training people who contribute to our society." The university's mission is to foster individuals 1) who are considerate and well-mannered; 2) who have basic practical knowledge; 3) who can think flexibly; and 4) who can live an enjoyable and fulfilling life.

## School and Research Institute : Organization Chart

### Kobe Design University



The organization has been established to further activate research in arts and design. It will support research conducted by faculty members, including interdisciplinary collaborative research with researchers within and outside the University, as well as industry-university collaboration, international collaboration, and funded research, and will help faculty members obtain scientific research funds, disseminate their research findings, and manage the Society for Design and Art Fusing with Science and Technology. It will comprehensively manage its activities in coordination with its institutions. Each institution will set a specific research subject and be involved in interdisciplinary, comprehensive research and investigation, academic exchanges with researchers within Japan and overseas, compiling research results, storing them in its library and information center, and holding workshops, exhibitions, lectures and symposia as part of its role in the dissemination of research findings.

### Research Institute of Asian Design

The Research Institute of Asian Design aims to rediscover vital formative arts in Asia, where rich and traditional cultures, which are different from Western culture, are still rooted in daily life, and to establish "Asian Design" based on its unique usage.



Through research on such projects as "Asian headgear," "Asian plants and trees," "Asian spirals" as well as the already launched study on "Asian floats," we will reaffirm the values and meaning of the vast number of formative arts embraced by Asian cultures to use them in modern art.

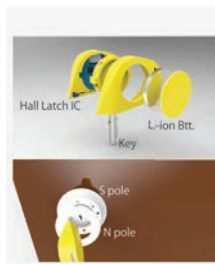
### Research Institute of Environment and Landscape Design

The Research Institute of Environment and Landscape Design focuses on studies on architecture, urban areas and landscapes. We study the methodology of sustainable environmental design with a global perspective and the use of specific characteristics of the area. At the same time, we aim to facilitate a wide range of projects to solve various social issues by the power of design, in collaboration with local governments, private companies, citizens groups, NPOs, overseas educational organizations and international academic institutions.



### Research Institute for Medical and Wellbeing

Japan is the world's most aging society. One of its urgent challenges is to prepare for an aging population in all aspects of life in general. There are high expectations for scientific and technological development to cover age-related decline in mental and physical function. The design of medical and welfare-related products requires ingenuity and a focus on functionality and safety, with careful attention being paid to fitting the products naturally into our day-to-day life.



Since other Asian countries are expected to face an aging society in the near future, we will create a research network with other institutions both within Japan and overseas to communicate and share information with the world.

### Interaction Design Laboratory

In the Interaction Design Institute, we will be involved in design activities that focus on the mutual interaction and behavior between human beings and artificial materials, systems, and environments. Interaction design will paint the picture of the future and create new values through examining the role of future society, life and people, communication and other various activities, as well as the design of materials and systems. To this end, we need to acquire knowledge from various fields and involve ourselves in team activities and projects in collaboration with different fields.



### Amusement Media Laboratory

The Amusement Media Laboratory is a research institution for considering "fun." We hope to make it the place for collecting "fun" and sharing "fun" with people. We aim to:

- (1) Establish an archive of classical films and images, which were once at the center of entertainment, and screen them in the University's theater.
- (2) Study the history of games and establish an environment for playing at home by creating and publishing a database of board games, which were once at the center of home entertainment.

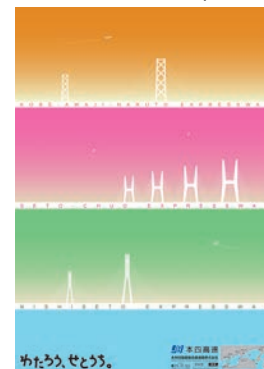


As a university with features that are deeply rooted in Kobe, KDU works to enhance partnerships with local governments, companies and educational institutes. By reinforcing coordination with local communities, KDU efficiently responds to the needs of the times and society and plays a role in creating a better future society. Together with the local communities, KDU carries out various activities to detect and resolve specialized issues and social challenges, including human resource development and local industry revitalization.

### Funded Research: Revitalization & Use Promotion of Honshu-Shikoku Bridge Expressway

This research aimed to promote the revitalization of the whole Setouchi area and attract more visitors to the area, through offering plans to revitalize Honshu-Shikoku Bridge Expressway and promote its utilization.

Under the lead of their seminar supervisors, students studied what the area's charms are for tourists. Then they designed posters for promoting the area's tourism and goods for tourists, in their own way, and made presentation on their works.



As a result, two posters were selected to be displayed at rest stops on highways and major facilities around the area. One of the posters is a work expressing the warmth of connection between people while featuring the bridge, which is one of the most attractive tourism resources in the area and a structure built using the essence of Japan's advanced bridge technology; the other is a work created in the motif of the area's local products.

### Examples of studies involving cooperation with local communities in 2015

- ▶ Production of Junior Chamber International Kobe Promotional Video
- ▶ Production of brochures of Hyogo Prefecture-grown Wood Supply Promotion Council and Hyogo Prefecture Wood Utilization Promotion Council
- ▶ Research on an art project to create a new culture in the area along the Tojo River Canal
- ▶ Design development of interior goods that suit various kinds of lifestyles
- ▶ Survey research about new "manufacturing" with Kobe's farm and marine products
- ▶ Production of an advertising display for Kobe Parks and Greenery Association
- ▶ Design suggestions on the entrance walls of a condominium building
- ▶ Research on the history and the culture of Miki City
- ▶ Project to preserve and utilize old folk houses in Sasayama City
- ▶ A "special fashion district" project for Banshu-ori textile
- ▶ Development of paper promotional items
- ▶ Research on the history of building a cultural landscape city in Iwakuni City
- ▶ Design suggestions on lotion packaging labels
- ▶ Cooperation in filming "The Edge Film"
- ▶ Design suggestions of signs to promote public awareness of Ashiya City Citizens Manners Ordinance
- ▶ Suggestion in relation to renovation and regional development

As an interactive project with Montreal, which received designation as a City of Design of the UNESCO Creative City of Design Network in 2009, the same designation awarded to Kobe, an international workshop themed on reinventing the landscape and environment design of Kobe titled "WAT\_Kobe Japan 2009" was held at KDU, with more than 50 faculty members and graduate students participating from eight countries. Faculty members and graduate students of KDU as well as Kobe University, as universities of the host city, also participated in the workshop, and together, issues and possibilities of the six project target regions of Kobe City were discussed, and specific design propositions for urban improvement were compiled. In December 2011, "WAT\_Montreal 2011" was held in Montreal, Canada. We will henceforth develop and operate the UNESCO course "WAT\_Setouchi" with Montreal University.

As a member of Cumulus, one of the world's largest organizations in the field of art, design and media, established in 1990, KDU is actively engaged in international exchange with 226 design-related universities from 49 countries around the world as of 2015. Through coordination with Cumulus, KDU will work together with other member universities to promote academic exchange as well as programs for student exchange in the future.



### Support for In-Coming International Students

KDU has accepted more than 450 international students, including exchange and government-sponsored overseas students, from 36 countries and regions around the world, including Asia, North, South and Central America, the Middle East, and Europe. We offer various assistances to international students by providing opportunities for them to experience the daily lifestyles and cultures of Japan, so as to make the exchange experience as fruitful as possible.

### Student Exchange Program

- ▶ FH JOANNEUM Gesellschaft mbH University of Applied Sciences(Austria)
- ▶ University of Montreal (Canada)
- ▶ Berlin-Weissensee School of Art (Germany)
- ▶ Bandung Institute of Technology (Indonesia)
- ▶ National University of Kaosiung (Taiwan)
- ▶ National Taiwan University of Arts(Taiwan)
- ▶ National Yunlin University of Science & Technology (Taiwan)
- ▶ Dongseo University (South Korea)
- ▶ Beijing Institute of Technology (China)

### ▶Enrolled international students

Currently, 67 international students from ten countries study at KDU:  
 South Korea : 14; China : 39; Taiwan :6; Brazil : 1; India : 1; Tunisia : 1; Bosnia and Herzegovina : 1; Dominican Republic : 1; Portugal :1; Indonesia :2, etc. (As of October 2015)

### ▶Tutoring

Current KDU undergraduate and postgraduate students are appointed "tutors" to new students, offering them advice on study and campus life.

### ▶Other Support Systems

1. Opening of Japanese Course as a language class
2. Application by proxy for Certificate of Eligibility for Status of Residence Agency Guarantor System by KDU
3. Hosting office coordinating meetings (two days a month), various assistances for international students, guidance for scholarship procedures, and provision of information such as introduction of exchange programs

### ▶Scholarships

There are public and private scholarship programs available for international students, and either can be applied for and utilized after enrollment.

- Monbukagakusho Honors Scholarship
- Rotary Yoneyama Scholarship
- etc.

### ▶Housing assistance

There is no student dormitory, but we provide information on international student housing operated by public institutions, apartments accepting international students, home-stays in Japanese homes, etc.

## Doctoral Degree Course Arts & Design Division

The Doctoral Degree Course of the Arts & Design Division is positioned above the Master's Degree Course, the Integrated Arts & Design Division. The Doctoral Degree Course aims to develop human resources with a high level of intelligence who can sustain intellectual-based society in various ways, on the basis of Arts and Design. At the same time, through academic activities in pursuit of Arts and Design, the Division trains highly creative researchers with proven research and development capabilities, and educators with a strong aptitude for both education and research. The Division has so far produced 52 graduates with doctoral degrees (in Arts and Design, as of October 2014).

### ▶Curriculum design features

As the fundamental specialized research cores, the Doctoral Degree Course has established the following four academic domains: Space and Environment Research Core; Humanity, Products and Life Core; Media and Communication; and Art and Creation. The curriculum is designed to promote specialized joint projects with other universities, research institutes, the industrial community and the local community.

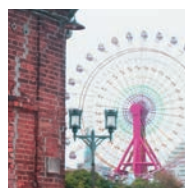
## Master's Degree Course Integrated Arts & Design Division

The Master's Degree Course of the Integrated Arts & Design Division fosters internationally-minded artists, designers and creators, by developing and further deepening individual students' expertise acquired in undergraduate studies to pursue Arts and Design, which encompasses the three research fields — "science & technology", "art & culture", and "humanity & history". Students of this Course can also work on practical research and production on various themes in the field that integrates interaction design, sustainable design, universal design, asian design etc.

### ▶Curriculum design features

To enable students to broaden their perspectives and to acquire greater sensitivity, the Master's Degree Course offers two basic subjects, Theory of Arts and Design and Academic Literacy & Presentation, as well as subjects of the Integrated Project for Research, which students work on as a team transcending the fields of specialties. The Division's curriculum also includes comprehensive program subjects that cover several academic domains, and specialized program subjects that are closely related to the undergraduate studies. Individual students conduct special research on their own themes under the guidance of excellent faculty members, and compile their findings as their Master's thesis (works).

Various fields  
integrated at the Graduate School  
— Acquisition of interdisciplinary abilities  
of arts and design



## Department of Environmental Design

### ► Community Design Course

In the Community Design Course, students learn about designing a community where various people live together. They study not only how to design buildings, roads and parks, but also how to develop a safe and secure community.

### ► Landscape Design Course

The Landscape Design Course helps students develop abilities to design outdoor spaces, such as parks, plazas, and green areas around buildings. Students acquire methodology of comprehensive environmental creation making effective use of natural ecosystems and state-of-the-art science and technologies.

### ► Architectural Design Course

The curriculum of the Architectural Design Course features a wide variety of building designs, including designs of housing, commercial facilities, schools and other public architecture that enrich people's lives. The Course also provides knowledge about construction techniques, history and culture and harmonization with the natural environment.

### ► Renovation Design Course

Students of the Renovation Design Course study how to design better living spaces, through the reuse of existing buildings and interiors, building renovation, and revitalization of housing complexes. Students acquire the techniques and design ability required for various renovations, extensions and reconstruction work.



Seeking to train designers who can create total space designs to shape the future of sustainable community design and new lifestyles.

## Department of Product and Interior Design



### ► Universal Design Course

Toward the creation of a society where everyone can live a comfortable and convenient life, the Universal Design Course pursues designs that envision and express the future of various products and their requirements, from the three perspectives of universal design, community design and human engineering.

### ► Furniture and Space Design Course

The Furniture and Space Design Course provides comprehensive education about interior design, furniture design and lighting design. Students work on designs of housing spaces and stores, formative designs of furniture and apparatus, and space rendering, making full use of various types

of materials, woodworking and other equipment.

### ► Industrial Design Course

In this course, students study design as a means of realizing the ideal state of "next-generation" products, ranging from familiar household electrical appliances, information terminals, sundry goods, stationary, toys, to industrial equipment, all of which produce new convenience, pleasure and comfort.

### ► Car Design Course

On the theme "transfer and transport" by automobiles and motorcycles, the Car Design Course is intended to pursue comfort in mobility spaces, exterior designs and the ideal state of mobility for electric and other vehicles that will further evolve in the future.

Offering four courses and nine academic categories focused on manufacturing that enlivens our lives and contributes to society

## Department of Fashion and Textile Design

### ► Fashion Design Course

The Fashion Design Course helps students to acquire the abilities necessary for design proposal, apparel design and sewing, so as to create new-era designs in line with trends of the times.

### ► Textile Design Course

In the Textile Design Course, students learn a wide variety of textile expressions, while acquiring three basic skills: yarn dyeing and weaving, knitting, and printing of patterns on textiles.

### ► Fashion Planning Course

This Course offers students skills in market research, product planning and promotion, which are vital when producing a fashion business in response to the needs of people and society.



Textile design, fashion design and fashion planning – Proposing lifestyles through fashion

## Department of Visual Design

### ► Graphic Design Course

The Graphic Design Course explores a vast realm of design including that of posters, brochures and packages. Opportunities abound to develop students' practical ability, through collaborative projects with local communities and companies. The Course aims to train students as creators who can play active roles in various fields.

### ► Editorial Design Course

Editorial design refers to editing and designing books, magazines, newspaper and various other printed materials. By mainly offering classes on DTP-dedicated software, the Editorial Design Course trains students into editorial design professionals and book designers who can engage actively in various fields.

### ► Web, Motion Graphics Course

This course provides students with an opportunity to learn a wide range of modes of expressions using information media, from basic web skills including HTML to visual expressions and media art. The course aims to develop creators who are able to work in various fields to meet advanced needs in web space and keep pace with ever-evolving technology.

Aiming to propose world-class designs from Japan to meet the needs of society

### ► Illustration and Drawing Course

Classes in the Illustration and Drawing Course begin with fundamental training to understand the basics of illustration. Students then gain the ability not only to create works on their own individual themes, but also to produce value-added illustrations that can meet clients' requirements. Through such studies, the Course develops students' expressive power and the skills required in working as professional artists.

### ► Picture Book Design Course

The Picture Book Design Course provides solid education to ensure that students can obtain various skills and knowledge to work as professional picture book authors. Expert faculty members offer systematic and practical instruction, enabling students to cultivate original expressive ability to produce pictures and stories on their own.



## Department of Manga Media

### ▶ Story Manga Course

The Story Manga Course focuses on teaching cinematic methods of visual expression and text-based storytelling techniques. The curriculum aims to develop students' ability to produce full-length works of Japan's characteristic narrative manga.

### ▶ Web Animation & Comic Course

Based on the basics of manga expression, the Web Animation & Comic Course proposes and puts into practice new expressions on the web. Students produce works that cross the boundaries of countries, cultures and genres, and publish their works on electronic media.

### ▶ Comic Illustration Course

Based on the expressive skills of narrative manga, students in the Comic Illustration Course intensively pursue the potential of storytelling expression through illustration. The Course curriculum stresses the importance of skilled utilization of color to create high-quality works.



## Studying essence of Japanese Manga, featuring film techniques and solid plots



## Department of Image Arts

### ▶ Filmmaking Course

The Filmmaking Course provides students an opportunity to learn the basics of filmmaking and to play various roles in producing a short film from the first year.

The students can acquire practical technological skills that can be actively used in the filmmaking field.



## Aiming to nurture professionals who will lead the visual image production industry

### ▶ Animation Course

The Animation Course provides training in drawing animations, storytelling, and making animations move attractively. Students can receive instructions directly from faculty members who are leading creators in the Japanese animation industry. This Course offers the best environment to study animation.

### ▶ 3D-CG Course

The faculty members are among the top creators who are active in the field of 3D-CG. Using professional-use workstations that maximize the possibility of 3D-CG, students can intensively learn cutting-edge techniques at the highest level.

## Department of Arts and Crafts

### ▶ Art Education Course

The Art Education Course trains students as future educators. While communicating with local communities and people through art workshops and other opportunities, students develop a rich mindset and sensitivity. The course pursues creative learning to link art, education and society.

### ▶ Painting Course

This course provides students an opportunity to learn about the application of color, prints, photo technologies, in addition to the basics of Western- and Japanese-style paintings. On the basis of painting skills, students improve their power of expression and find out their own characteristics. The Course nurtures artists who can work as painters and illustrators recognized in society.

## Creating hand-made works and pursuing the realm of Arts and Crafts expressed by these works

### ▶ Sculpture & Character Figures Course

This course is for learning how to use various materials to express images in three dimensions, to pursue unique expressions by using figurine making and carving techniques. The Course develops artists who can be self-reliant in society as creators in the field of 3D modeling.

### ▶ Glass & Ceramics Course

The Glass & Ceramics Course provides students with traditional glass and ceramics techniques, as well as advanced techniques commonly used for glass and ceramics manufacturing by plaster mold casting. The course trains artists who can create unique works, and use them, by making full use of the characteristics of materials.

### ▶ Jewelry & Metalworking Course

After learning the basic techniques required for jewelry making and metalworking, students master sophisticated techniques to create cloisonné ware and the like. The Jewelry & Metalworking Course nurtures individuals who can play active roles in society, with their great sensitivity and ability to produce figurative arts.



## Center for Liberal Arts

### ▶ A group of eight subjects

Basic education subjects comprise a group of eight subjects "Foundation of Design", "Art and Culture", "Science and Technology", "Humanity, History and Society", "Communication", "Physical Education and Health", "Basic Design Skills", and "Social Application and Career Development".

In addition to Arts and Design, which characterizes education at KDU, these subject groups include history, science and culture and other liberal arts subjects aimed at imparting extensive general knowledge and skills essential to living in modern society, as well as fundamental computer-based expression techniques and basic practical training and exercise of design and arts.

### ▶ A group of specialized education subjects

Specialized education subjects comprised a group of subjects, which are provided on a university-wide basis by the seven departments. Moreover the Center for Liberal Arts offers various study options, through cooperation with specialized departments, the graduate school and research institutes.



Developing fundamental abilities for creative expressions, by learning a wide range of knowledge and diverse expressive skills required by Arts and Design



### Career support

KDU is expected to produce work-ready graduates equipped with professional knowledge and techniques. Graduates are actively working at enterprises not only in Kobe, but also in various other parts of Japan and Asian countries.

Asahi Kasei Homes Corporation; Asahi Production Co., Ltd.; Urban Research Co., Ltd.; Ichijo Co., Ltd.; Issey Miyake Inc.; Osaka City Hall; Kai Graphics Inc.; Kai Corporation; Capcom Co., Ltd.; Kaminomoto Co., Ltd.; Calbee Inc.; Kyoto Animation Co., Ltd.; Kyoto Shobo Publishing; Graphic Corporation; Ltd. Kay Uno; Shin-ei Animation Co., Ltd.; Space Co., Ltd.; Seiban; Sekisui House, Ltd.; Tiger Corporation; Daihatsu Motor Co., Ltd.; Daiwa House Industry Co., Ltd.; Takarazuka stage Co., Ltd.; DesignArc Co., Ltd.; Denso Corporation; Tohgashi Co., Ltd.; Tose Co., Ltd.; Toyota Motor East Japan Inc.; Naris Cosmetics Co., Ltd.; Nishikawa Living Inc.; West Japan Railway Company; Buffalo Inc.; Panasonic Healthcare Co., Ltd.; Beams Inc.; Five Foxes Co., Ltd.; Production I.G, Inc.; Fujitsu Ten Ltd.; Benesse Holdings, Inc.; Honda R&D Co., Ltd.; Honma Golf Co., Ltd.; Mazda Motor Corporation; Mitsubishi Motors Corporation; Mizuno Corporation; United Arrows Ltd.; Yokoo Studio Co., Ltd.; Wakayama Prefectural Government; Wacoal Corporation; OLM Digital, Inc., etc.  
Corporation and many others.

### Certifications

KDU offers courses leading to various types of specialist certifications, including the following:  
Curator's certificate (all departments) Senior high school teacher certificates, listed as follows Senior high school teacher certificate (Type 1) in arts and crafts in Japan(Dept. of Product and Interior Design /Dept. of Visual Design / Dept. of Manga Media / Dept. of Image Arts/ Dept of Arts and Crafts) Senior high school teacher certificate(Type 1)

in engineering in Japan(Dept. of Environmental Design/ Dept. of Fashion and Textile Design) Junior high school teacher certificate(Type 1)in arts(Dept. of Product and Interior Design/Dept. of Visual Design /Dept. of Manga Media/Dept. of Image Arts/ Dept. of Arts and Crafts)KDU students can also gain eligibility by taking examinations to obtain the certificate for 1st or 2nd Class Qualiend Architect/ Building Engineer (for 1st class, applicants must have work experience; Dept. of Environmental Design) and Interior Planner (applicants must have work experience; Dept. of Environmental Design / Dept. of Product and Interior Design).

### Scholarships

KDU financially supports excellent students' campus lives with its own scholarship systems.

- ▶Tanioka Scholarship: It is possible to apply for international students.
- ▶Tanioka Gakuen Educational Foundation Kobe Design University Educational Aid (payment of interest on student loan): It is not available for international students.
- ▶Kobe Design University Educational Support Scholarship: It is possible to apply for international students.
- ▶Kobe Design University Bunbun Scholarship: It is available for international students only.
- ▶Foreign Student Assistance Association Financial Support: It is available for international students only.

There are also external groups which offer various scholarship programs such as Japan Student Services Organization (Note: their loan program is not available for international students).

### Honors Students

KDU recognizes outstanding students as honors students, and awards financial aid toward their education. Academically (including studio/practical work) outstanding current students receive scholarships equivalent to a quarter of the annual tuition. Academically outstanding new students receive, after enrollment, scholarships equivalent to half of the first year's tuition. New students admitted by recommendation also receive tuition exemptions or scholarships when they fulfill the required conditions.

KDU's Graduate School offers a first-year honors student program, which exempts half of the first-year annual tuition for students selected on the basis of excellent entrance examination results from among those newly admitted to the KDU Graduate School directly from KDU (excluding government-financed overseas students). For existing honors students, the Graduate School has a program allowing exemption of half of the annual tuition for those selected from among all students already enrolled in the Graduate School, excluding government-financed overseas students, on the basis of their academic performance in the previous year.

### Educational Support Association

Kobe Design University Education Support Association consists of student's guardians. It supports students by scholarships, career support, holding educational round-table meetings, supporting of the graduation party, and development and maintenance of the educational environment by supplying equipment and educational materials.

## Support for students in their current and future endeavors

For inquiries, please contact:

Kobe Design University  
8-1-1 Gakuennishi-machi, Nishi-ku,  
Kobe 651-2196, Japan

Tel:+81-78-794-2112 / Fax:+81-78-794-5027

E-mail .....international@kobe-du.ac.jp

Website (Japanese).....http://www.kobe-du.ac.jp/

Website (English).....http://english.kobe-du.ac.jp/