

Kobe Design University

As an international air and sea gateway,
Kobe City has accepted various different cultures from around the world.
In this cosmopolitan city of Kobe, Kobe Design University (Kobe DU) fosters creators who
can play important roles in society, as a venue for learning technology, Arts and Design.
New expressions and visions will carve out a new future.
We propose global design from Kobe —



Greeting from the President



Takahito SAIKI

The "Arts and Design Revolution" of Kobe Design University —Inspiring people through art, and enriching people's lives with design—

Aspiring to become a world-class university

Ever since it was established in the cosmopolitan city of Kobe in 1989, Kobe Design University (Kobe DU) has constantly striven to become a world-class university that teaches and researches design and art to achieve the integration of "Art & Culture" with "Science & Technology".

Eyes toward the world and Asia

In 2009, Kobe DU was accredited as a member of Cumulus (the International Association of Universities and Colleges of Art, Design and Media), which currently consists of over 280 members from 56 countries, and commenced collaboration with these design-related universities and colleges around the world. Since 2005, the Graduate School has conducted integrated programs under which students of partner universities and colleges in four member countries in Asia (Japan, China, Taiwan and South Korea) visit these institutions in turn.

Promoting regional cooperation and addressing social issues

In 2016, Kobe DU Comprehensive Research Organization was established to invigorate research in Arts and Design and social contribution activities. The Organization supports 25 interdisciplinary collaborative research projects carried out by researchers and creators within and outside the University, thereby implementing collaboration with the local and international communities. In 2008, Kobe DU independently established KDC/Kobe Design Creative Co., Ltd., which conducts funded research to resolve specific social issues.

Training creators who will lead the future

Our 103 full-time faculty members supporting this creative educational environment are top-level experts in their respective fields. They leverage their practical experience and extensive knowledge to build programs that transcend the borders of academic disciplines to provide an education that nurtures future talent capable of responding to the changing demands of society.

"What is Arts and Design?"

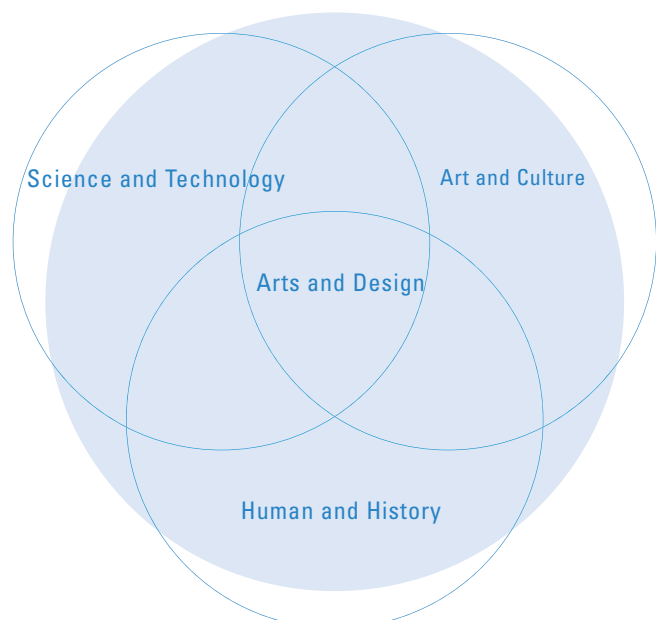
"Arts and Design" is a field of study based on human activities, history and culture, integrating Science and Technology with Art and Culture through art and design-related academic activities.

The field of "Arts and Design" originated in Japan in 1968, aiming at the "humanization of technology" as a response to the various problems of pollution and human alienation observed during Japan's high economic growth period. Today, more than five decades later, new issues—such as rapid progress in information technologies, the globalization of information networks, changes in the urban and rural environments, disasters and changes in natural environments caused by global warming, widening economic disparities, economic stagnation, and the surge in the aging population—have joined the universal challenges that academic activities related to Arts and Design are expected to address.

To resolve these new universal challenges, Arts and Design seeks to express the living environment, living space, and the venues of information inherent in these, in order to enrich people, the society that they create, and the environment surrounding them, on the theme of promoting education and research in arts, design and media. Concrete activities have begun to shape a future society in which sustainable design, universal design, and design management are implemented to express the time in which we live.

In this context, Kobe DU comprises a graduate school as well as seven undergraduate departments that offer 25 specialized courses. Our students can acquire not only cutting-edge scientific/technological capabilities in line with present circumstances and the power of formative expression, but also deep insight, imagination, and the ability to make decisions based on social ethics concerning people and their social lives. To be more specific, Arts and Design is a form of education and research that is implemented throughout all the following processes: development of awareness, presentation of new ideas, investigation and conceptualization, planning and drawing up of designs, actual expression and shaping, and then, practical use, maintenance and repair.

Kobe DU works in close concert with domestic and international art- and design-related universities and local communities to pursue the theme of Arts and Design, thereby striving to become a university that contributes to both local and international communities.



Kobe Design University

Founding Philosophy of Tanioka Gakuen Educational Foundation

The founding philosophy is to train people who will contribute to society. The University conducts its educational and research activities in order to foster individuals who are considerate and well-mannered, who have basic practical knowledge, who can think flexibly, and who can live an enjoyable and fulfilling life.

Mission and Objective of Kobe Design University

This University aims to advance technologies optimum for human living, and to this end, researches "Arts and Design" that takes advantage of technologies from the standpoint of humankind. We also aspire to cultivate next-level designers, or, in other words, comprehensive designers who extensively incorporate a wide range of technologies beneficial to

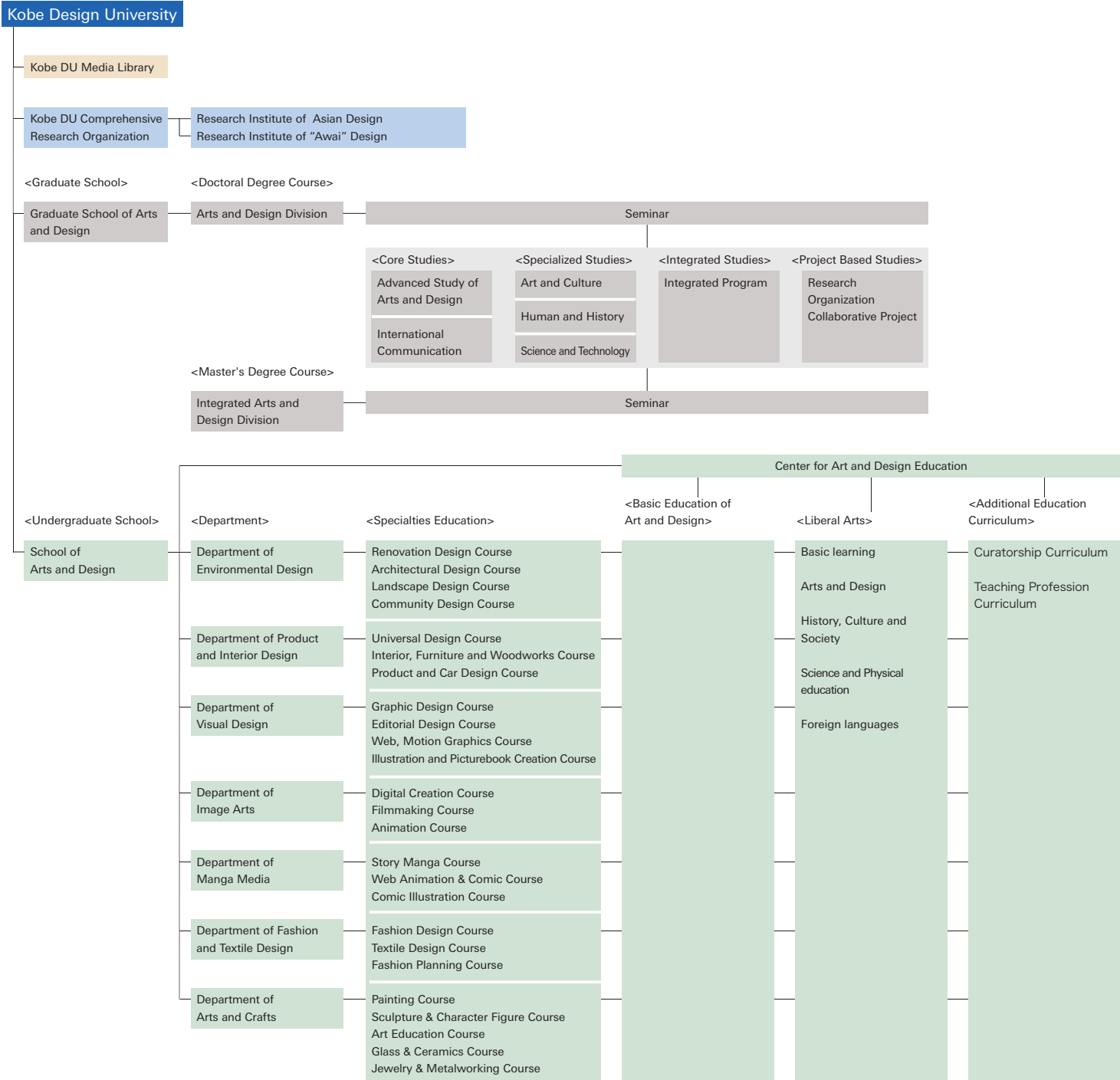
humankind based on interdisciplinary knowledge of humanities, social sciences, natural sciences, artistic sensibilities, and good education.

- ▶ Founded: in 1989
- ▶ Total area of campus: 114,139m²
- ▶ Total floor area of campus buildings: 33,120m²
- ▶ Number of students: 1,658 (1,598 Undergraduates, 60 Graduates)
- ▶ Number of faculty members: 307 (incl. 204 part-time members)
- ▶ Number of administrative staff members: 87 (incl. 21 part-time members) (As of Oct. 2018)

Parent organization

Tanioka Gakuen Educational Foundation

School and Research Institute : Organization Chart



Kobe DU Comprehensive Research Organization supports and promotes collaborative research and education within and outside the University, industry-university collaboration, international collaboration, funded research, activities surrounding Grants-in-Aid for Scientific Research, management of institutes of the Organization, intellectual properties in design, the Society for Design and Art Fusing with Science and Technology, and more, in order to further activate research in arts and design.

Since 2016, it has been promoting research on social issues, international collaboration and collaboration in education from the perspective of "Arts and Design". and to this end, establishment of a flexible structure to conduct research activities that meet the needs of future society will be promoted.

Also, activities of the Research Organization are coordinated with the graduate school curriculum to reflect and utilize research topics and their results in education.

Grants-in-Aid for Scientific Research

Our promising research activities are selected by the Ministry of Education, Culture, Sports, Science and Technology to receive Grants-in-Aid.

<AY 2018: 13 cases>

▶ Mitsuo Toyazaki: Grant-in-Aid for Scientific Research C - "Basic research on sustainable preservation and development of traditional culture on the five islands of the Yoshima region"

▶ Dai Okushima: Grant-in-Aid for Young Scientists - "Does the property of the response curve for deoxidization in active muscles reflect insufficient oxygen supply?" etc.

<AY 2017: 15 cases>

▶ Jiro Sagara: Grant-in-Aid for Scientific Research B - "Proposal on a housing system that supports elderly people suffering from dementia in living independently"

▶ Maki Nagano: Grant-in-Aid for Young Scientists "Cross-border space and Multi-layered Culture of living in the migrant villages mainly on Kinmen islands" etc.

<AY 2016: 18 cases>

▶ Eiji Hashimoto: Challenging Exploratory Research - "Research on explaining manga literacy using an eye tracking system"

▶ Yuko Araki: Grant-in-Aid for Scientific Research C - "Sustainability from the perspective of diversity in traditional packaging, and development of the social design program" etc.

<AY 2015: 18 cases>

▶ Kohei Sugiura: Challenging Exploratory Research - "Comparative research on headdresses in the ritual cultures of Southeast Asia"

▶ Masae Bamba: Grant-in-Aid for Scientific Research C - "Textile design to pass on traditional arts and crafts, on the topic of Kyokechi dyeing" etc.

Funded Research

As a university with features that are deeply rooted in Kobe, Kobe DU works to enhance partnerships with local governments, companies and educational institutes. By reinforcing coordination with local communities, Kobe DU efficiently responds to the needs of the times and society and plays a role in creating a better future society. Together with the local communities, Kobe DU carries out various activities to detect and resolve specialized issues and social challenges, including human resource development and local industry revitalization.

Research Institutes

Each institute has a set of research subjects, and conducts interdisciplinary and comprehensive research investigations, academic exchanges with research organizations within and outside of Japan, gathers results, etc., as well as hosts events such as research presentations, exhibitions, seminars, and symposiums.

▶ Research Institute of Asian Design

Conducts research on new topics through international coordination, and hosts international events such as symposiums and design exhibitions through international coordination.

▶ Research Institute of "Awai" Design

"Awai" in Japanese means "space" or "relationship" between two things. It is hard to see "Awai" itself. In Christian Art, angels are used to visualize "Awai", and "Noh" Japanese classical performing arts expresses "Awai" as going back and forth between the present life and the afterlife on the stage. We research and analyze such "Awai", and attempt to create a new work of "Noh" on the theme of angel.



Practices and considerations regarding renovation and urban planning

A hands-on research project ongoing since 2010 has been consigned by Daiwa Senpaku Tochi Corporation, which mainly conducts business in Kobe. There are large residential districts in Suma Ward, developed since the 1960s, and many of the houses constructed early in the development are deteriorating. This research project proposes new ways to give magnetism to each area by renewing them one by one with focus on their respective individuality. Teamed with architecture offices and building contractors, renovation and reconstruction of vacated buildings are gradually taking place. Ten cooperative projects, including two share houses and two units within housing complexes whose renovations were designed by Kobe DU, have received the Good Design Award over four consecutive years from 2013 to 2016.



Examples of studies involving industry-academia collaboration in 2018

▶ Conceiving and producing a special design for the effective use of the decks in the Sannomiya Center Shopping Street

▶ Creating signs for the Museum Road

▶ Research on children's art and design learning activities

▶ Participating in the Banshu fabric fashion special zone project

▶ Developing designs for a new logo mark and new logotype to celebrate the 50th anniversary of Sun TV

▶ Designing PR goods and posters to promote the Honshu-Shikoku Bridge Expressway

▶ Research on the preservation and effective use of regional historical assets in Inuyama City

▶ Deliberating on a catchphrase to encourage people to rediscover the attractiveness of the Arima hot spring resort in autumn

▶ Research and deliberations toward the preservation and reconstruction of historical villages in the Kathmandu Valley, Nepal

▶ Advice on universal wear product development

▶ Creating video materials for "Kobe no Yujiten (Kobe sightseeing guide)" on a consignment basis

▶ Offering design proposals under the Design Soil educational program

▶ Research on a design curriculum to invigorate Aina Satoyama Park and the nearby area

▶ Research on products and services by using paper-craft figurative expression and augmented reality (AR) works

▶ Designing seminars and workshops regarding recording, editing and information dissemination by making use of image arts

▶ Research on children's creative activities

▶ Making a final adjustment to the curriculum for Sasayama Architecture School and building a system to implement the curriculum in a sustainable manner

▶ Planning and managing the Miki City history and culture viewing program

▶ Deliberating on the concept for redeveloping the square in front of Shin-Kobe Station

▶ Holding workshops to seek the potential of design education for elementary school children through the use of daily clothing

▶ Design a process for a hands-on large scale craft workshop

▶ Planning and implementing a fashion project to commemorate the 40th anniversary of the conclusion of the Japan-China Treaty of Peace and Friendship

▶ Research on techniques for conference video recording, editing and distribution

▶ Planning and managing the "Dressmaking Class for Adults", a seminar tailored for seniors to improve their skills

▶ Creating three-dimensional prints of bird fossil skeletons for the joint project with a museum to establish the methods of three-dimensional data optimization and 3D printing of Archaeornithes fossil skeletons

▶ Cooperating to hold the event to dress the Manneken Pis with a winter coat at the Rokko Alpine Botanical Garden

As an interactive project with Montreal, which received designation as a City of Design of the UNESCO Creative City of Design Network in 2009, the same designation awarded to Kobe, an international workshop themed on reinventing the landscape and environment design of Kobe titled "WAT_Kobe Japan 2009" was held at Kobe DU, with more than 50 faculty members and graduate students participating from eight countries. Faculty members and graduate students of Kobe DU as well as Kobe University, as universities of the host city, also participated in the workshop, and together, issues and possibilities of the six project target regions of Kobe City were discussed, and specific design propositions for urban improvement were compiled.

As a member of Cumulus, one of the world's largest organizations in the field of art, design and media, established in 1990, Kobe DU is actively engaged in international exchange with over 280 design-related universities from 56 countries around the world. Through coordination with Cumulus, Kobe DU will work together with other member universities to promote academic exchange as well as programs for student exchange in the future.

Support for Incoming International Students

Kobe DU has accepted approximately 500 international students, including exchange and the MEXT scholarship students, from 37 countries and regions around the world (incl. Asia, North, South and Central America, the Middle East, and Europe). We offer various assistance to international students by providing opportunities for them to experience the daily lifestyles and culture of Japan, so as to make the exchange experience as fruitful as possible.

Student Exchange Program

Kobe DU has partnered with 11 overseas universities, and of those, has established student exchange programs with the following 9 universities listed below. The student exchange program provides students with an opportunity to study arts and design in other countries, and dispatches one student to and accepts one from each partner. The period of the program is for one year or half a year.

- ▶ FH JOANNEUM Gesellschaft mbH University of Applied Sciences (Austria)
- ▶ University of Montreal (Canada)
- ▶ Berlin-Weissensee School of Art (Germany)
- ▶ Bandung Institute of Technology (Indonesia)
- ▶ National University of Kaosiung (Taiwan)
- ▶ National Taiwan University of Arts (Taiwan)
- ▶ National Yunlin University of Science & Technology (Taiwan)
- ▶ Dongseo University (South Korea)
- ▶ Beijing Institute of Technology (China)

▶Enrolled International Students

Currently, 99 international students from 11 countries study at Kobe DU:

China 71 / South Korea 11 / Taiwan 5 / Indonesia 4 / Malaysia 1 / Canada 1 / Austria 1 / El Salvador 2 / Venezuela 1 / Nicaragua 1 / Dominican Republic 1 / etc. (As of Oct. 2018)

▶Tutoring

Current Kobe DU undergraduate and graduate students are appointed "tutors" to new international students, supporting their study and campus life.

▶Scholarships

Public and private scholarship programs are available for international students, and both can be applied for after enrollment.

▶Housing Assistance

Kobe DU offers international students a furnished university-rented municipal housing and an apartment building dedicated for Kobe DU students. Both are accessible on foot.



Arts and Design Division, Doctoral Degree Course

Arts and Design is positively expected by society to have the capabilities to create new values through research that interweaves a wide range of learning and fields. The Doctoral Degree Course is designed for students to further develop art and design expertise acquired up to this point and, at the same time, identify innovative research themes that would yield new values and perspectives and conduct research and development so that it may cultivate unique and original researchers. This endeavor simultaneously cultivates instructors with appeal and proactive dynamism. With many international students, the program is active on a global level.

▶Curriculum Features

Individual research themes are investigated and researched, and through a series of creative practices, students deepen their awareness toward their theme, try several analytical methods, and cultivate the ability to expand on the knowledge they've obtained. Aside from the special research, students obtain necessary knowledge by choosing subjects from the Master's Degree Course curriculum. Subjects for Projects coordinated with the Research Organization will also support the research activities. Seminar is a subject that seeks creative and unique researches.

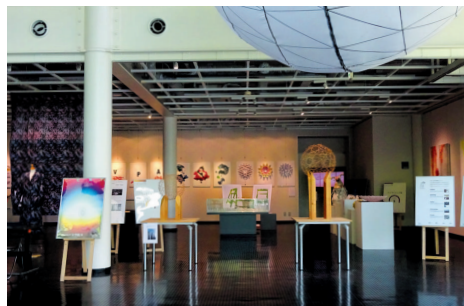
Integrated Arts and Design Division, Master's Degree Course

Based on "Arts and Design", which fuses "Science and Technology", "Human and History" and "Art and Culture", the Master's Degree Course aims to enhance conceptual power, communication abilities and creativity in design and art through practical education and research activities connected to society. Abilities to think for oneself, develop questions, and discover possibilities for new expressions and designs are cultivated through creative art practices and cutting-edge knowledge in Arts and Design. It leads to cultivate human resources that contribute to society through their varied originality and global creative activities.

▶Curriculum Features

A new curriculum was introduced in AY 2017. In the Advanced Study of Arts and Design, students acquire the fundamentals by learning the mindset of designs that fuse science and art. By learning through lectures in three fields that constitute Arts and Design, seminars in subjects of each field, and project-based subjects that fuse the fields in order to identify themes in step with the times, students will enhance their knowledge base, art and design expertise, and conceptual power that transcends fields. Results of the research practices in the Master's Degree Course will be compiled as Seminar in the form of a thesis or a piece of work. The curriculum structure allows the course completion to be shortened to one year.

Enhance originality that spans across art and design from fundamentals and practices of Arts and Design



Department of Environmental Design

►Renovation Design Course

Students learn how to design better living spaces through the reuse of existing buildings and interiors, building renovation, and revitalization of housing complexes. Students acquire the techniques and design ability required for various renovations, extensions and reconstruction work.

►Architectural Design Course

The curriculum features a wide variety of building designs including designs of housing, commercial facilities, schools and other public architecture that enrich people's lives. This course also provides knowledge about construction techniques, history, culture, and harmonization with the natural environment.

►Landscape Design Course

This course helps students develop abilities to design outdoor spaces, such as parks, plazas, and green areas around buildings. Students acquire methodology of comprehensive environmental creation making effective use of natural ecosystems and state-of-the-art science and technologies.

►Community Design Course

Students learn about designing an urban space where various people live together. They study not only how to design a community consisting of buildings, roads and parks and other elements, but also how to develop a safe and secure community.



Seeking to train designers who can create total space designs to shape the future of sustainable community design and new lifestyles

Department of Product and Interior Design

►Universal Design Course

Toward the creation of a society where everyone can live a comfortable and convenient life, students learn various design concepts shared by all fields, with the main focus on universal design that takes a user-oriented approach. They acquire techniques to envision and express the future of various products and their requirements from the dual perspectives of communication design and inclusive design.

►Interior, Furniture and Woodworks Course

This course provides education regarding interior planning for housing and commercial facilities, as well as possible designs for furniture and lighting apparatus, and display designs. Students learn about the processes as involved, including figurative designs, research, planning and creating designs, and presentations. This course also imparts practical knowledge to produce and exhibit design works, using studio equipment.

►Product and Car Design Course

Students work on designs of various products around us, including stationery, toys, tableware, sporting goods and industrial products such as care and home electronics. They master the ability to conceptualize the usefulness of these products and how to enjoy these products, while going through the process of creating their works using various methods, ranging from manual crafting to production with a laser cutter or 3-D printer.



Offering three courses and seven academic categories focused on manufacturing that enhances our lives and contributes to society

Department of Visual Design

►Graphic Design Course

This course explores a vast realm of design including that of posters, brochures, and packages. Opportunities abound to develop students' practical ability through collaborative projects with local communities and companies. This Course aims to train students as creators who can play active roles in various fields.

►Editorial Design Course

Editorial design refers to editing and designing books, magazines, newspaper, and various other printed materials. By mainly offering classes on DTP-dedicated software, this course trains students into editorial design professionals and book designers who can engage actively in various fields.

►Web, Motion Graphics Course

This course provides students with an opportunity to learn a wide range of modes of expressions using information media, from basic web skills including HTML to visual expressions and media art. The course aims to develop creators who are able to work in various fields to meet advanced needs in web space and keep pace with ever-evolving technology.

►Illustration and Picturebook Creation Course

Illustrations can enrich visual communication and make it colorful. Students study how to create picture books for readers of all ages. They acquire basic techniques and knowledge that meet the latest trends, and receive practical training on how to develop their ideas, so as to find new expressions to answer the needs and expectations of society in the future.



Nurturing artists who facilitate visual communication by making full use of the latest digital skills and classic handwork techniques to create text, pictures, and motion graphics.

Department of Image Arts



►Digital Creation Course

This course aims to train students to become high-level creators who can envision digital images for the sake of social co-creation, not only in the fields of CG, games and videos, but also in a cutting-edge production environment, so as to implement practical activities and pursue future-oriented research.

►Filmmaking Course

This course provides students an opportunity to learn the basics of filmmaking and to play various roles in producing a short film from the first year. The students can acquire practical technological skills that can be actively used in the filmmaking field.

►Animation Course

This course provides training in drawing animation and storytelling. Students can receive instruction directly from faculty members who are leading creators in the Japanese animation industry. It offers the ideal environment to study animation in.

Aiming to nurture professionals who will lead the visual image production industry

Department of Manga Media

►Story Manga Course

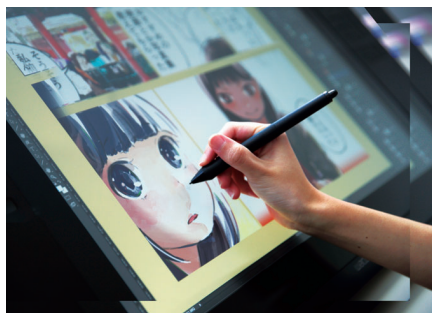
This course focuses on teaching cinematic methods of visual expression and text-based storytelling techniques. The curriculum aims to develop students' ability to produce full-length works of Japan's characteristic narrative manga.

►Web Animation & Comic Course

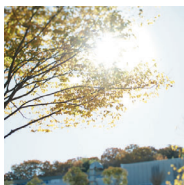
Based on the basics of manga expression, this course proposes and puts into practice new expressions on the web. Students produce works that cross the boundaries of countries, cultures and genres, and publish their works on electronic media.

►Comic Illustration Course

Based on the expressive skills of narrative manga, students intensively pursue the potential of storytelling expression through illustration. The course curriculum stresses the importance of skilled utilization of color to create high-quality works.



Raise manga readers to become manga artists
—Overcoming a challenging curriculum
enables students to discover the joy of
creation



Department of Fashion and Textile Design

►Fashion Design Course

Students learn all the skills for apparel design proposal, drawing and tailoring, so as to create new-era designs in line with trends of the times.

►Textile Design Course

Students learn a wide variety of textile expressions, while acquiring three basic skills: yarn dyeing and weaving, knitting, and printing of patterns on textiles.

►Fashion Planning Course

This course offers students skills in market research, product planning and promotion which are vital when producing a fashion business in response to the needs of people and society.

Textile design, fashion design and
fashion planning —Proposing lifestyles
through fashion



Department of Arts and Crafts

►Painting Course

Students learn about the application of prints, photo and digital technologies, in addition to the basics of Western- and Japanese-style paintings. On the basis of painting skills, students improve their power of expression and find out their own characteristics. The course nurtures artists who can work as painters and illustrators recognized in society.

►Sculpture & Character Figures Course

This course is for learning how to use various materials to express images in three dimensions, to pursue unique expressions by using figurine making and carving techniques. It develops artists who can be self-reliant in society as creators in the field of 3D modeling.

►Art Education Course

This course trains students as future educators. While communicating with local communities and people through art workshops and other opportunities, students develop a rich mindset and sensitivity toward learners of art. The course pursues creative learning to link art, education and society.

►Glass & Ceramics Course

This course provides students with traditional glass and ceramics techniques, as well as advanced techniques commonly used for glass and ceramics manufacturing by plaster mold casting. The course trains artists who can create unique works, and use them, by making full use of the characteristics of materials.

►Jewelry & Metalworking Course

After learning the basic techniques required for jewelry making and metalworking, students master sophisticated techniques to create cloisonné ware and the like. This course nurtures individuals who can play active roles in society, with their great sensitivity and ability to produce figurative arts.



Creating hand-made works and
pursuing the realm of Arts and Crafts
expressed by these works

Center for Art and Design Education

Basic Education of Art and Design

Bridging the gap between the conventional education and specialized education, it offers students subjects to acquire advanced knowledge and skills that contributes to society, and to understand the diverse specialized field in Arts and Design.

►Developing fundamental abilities in the diverse specialized fields of Arts and Design

►Learning the basics of the digital age

►Addressing interdisciplinary issues

►Promoting local and international cooperation

Liberal Arts

Liberal Arts is provided to train university students to be equipped with sophisticated general knowledge, to be able to understand diverse values, and to have good judgment and a strong sense of morality and humanity. It also aims to help students acquire the power of observation to refine their senses, and obtain a basic knowledge of art. Furthermore, students can develop their physical health and communication skills, so that they are well prepared to play an active role in the local and international communities.

►Basic learning

►Arts and Design

►History, Culture and Society

►Science and Physical education

►Foreign languages

Developing fundamental abilities for
creative expressions by learning
a wide range of knowledge and diverse
expressive skills required by
Arts and Design





Career Support

Kobe DU is expected to produce work-ready graduates equipped with professional knowledge and techniques. Graduates are actively working at enterprises not only in Kobe, but also in various other parts of Japan and Asian countries.

Kobe DU graduates have procured positions at the following companies during the recent years.

Asahi Kasei Homes Corporation; Asahi Production Co., Ltd.; Isuzu Motors Limited; Imayo & Co., Ltd.; EDELWEISS Co., Ltd.; OSAKA SEALING PRINTING Co., Ltd.; Osaka Prefectural Government; Casio Computer Co., Ltd.; Capcom Co., Ltd.; KARIMOKU FURNITURE INC.; Kyoto Animation Co., Ltd.; KUTSUWA Co., Ltd.; KUMAGAI GUMI Co., Ltd.; Graphic Corporation; Ltd. Kay Uno; K-TEC Corporation; KOEI TECMO Group, Ltd.; Kobe City Hall; Comme Des Garçons Co., Ltd.; SANZIGEN Inc.; SANWA SUPPLY Inc.; Zycc Corporation; J.C.STAFF Co., Ltd.; SHIMANO INC.; SHARP Corp.; STYLEM Co., Ltd.; Space Co., Ltd.; Sumitomo Forestry Co., Ltd.; Seiban; Sekisui House, Ltd.; Senshukai Co., Ltd.; SEMBA CORPORATION; Daihatsu Motor Co., Ltd.; Daiwa House Industry Co., Ltd.; TAKASHO Co., Ltd.; Takisada Nagoya Co., Ltd.; TASAKI & Co., Ltd.; DesignArc Co., Ltd.; DENSO TEN Limited.; TOEI ANIMATION Co., Ltd.; Tokyo eizo bijutu Co., Ltd.; TOKYO BIKO Co., Ltd.; TOLI Corporation; Naris Cosmetics Co., Ltd.; NIKKI ARCHITECTURAL OFFICE INC.; NITTO KOHKI Co., Ltd.; BANDAI Co., Ltd.; The Higo Bank, Ltd.; Hyogo Prefectural Government; HIROSHIMA TOYO CARP Co., Ltd.; Five Foxes Co., Ltd.; Fukuske Corporation; Mizuno Corporation; RUI SEKKEISHITSU Co., Ltd.; etc. Corporation and many others.

Certifications

Kobe DU offers courses leading to various types of specialist certifications, including the following:

- ▶ Curator's certificate (all departments)
- ▶ Senior high school teacher certificate (Type 1) in arts and crafts in Japan
(Dept. of Product and Interior Design / Dept. of Visual Design / Dept. of Manga Media / Dept. of Image Arts / Dept. of Arts and Crafts)
- ▶ Senior high school teacher certificate (Type 1) in engineering in Japan
(Dept. of Environmental Design / Dept. of Fashion and Textile Design)
- ▶ Junior high school teacher certificate (Type 1) in arts in Japan
(Dept. of Product and Interior Design / Dept. of Visual Design / Dept. of Manga Media / Dept. of Image Arts / Dept. of Arts and Crafts)

At Kobe DU, students can prepare themselves for government level examinations necessary to obtain the following qualification.

▶ 1st / 2nd Class Qualified Architect, 1st / 2nd Building Engineer

(Available to Dept. of Environmental Design Students only. For 1st class, applicants must have work experience.)

▶ Interior Planner

(Available to students in the Dept. of Product and Interior Design. By taking designated subjects, work experience is unnecessary.)

Scholarships

Kobe DU financially supports excellent students' campus lives with its own scholarship systems.

▶ Tanioka Scholarship

▶ Kobe Design University Educational Support Scholarship

▶ Foreign Student Assistance Association Financial Support: (only for intl. students)

▶ Tanioka Gakuen Educational Foundation Kobe Design University Educational Aid (payment of interest on student loan): (only for Japanese students)

There are also external groups which offer various scholarship programs such as Japan Student Services Organization. (Note: their loan program is available only for Japanese students)

Honors Students

Kobe DU recognizes outstanding students as honors students, and awards financial aid toward their education. Academically outstanding over 2nd year students receive scholarships equivalent to a quarter of the annual tuition. Academically outstanding 1st year students receive, after enrollment, scholarships equivalent to half of the 1st year's tuition. New students admitted by recommendation also receive scholarships when they fulfill the required conditions.

Kobe DU Graduate School offers a 1st year honors student program, which exempts half of the 1st year annual tuition for students selected on the basis of excellent entrance examination results from among those newly admitted to the Kobe DU Graduate School directly from Kobe DU (excluding MEXT scholarship students). For existing honors students, the Graduate School has a program allowing exemption of half of the annual tuition for those selected from among all students already enrolled in the Graduate School, excluding MEXT scholarship students, on the basis of their academic performance in the previous year.

※The MEXT scholarship is offered by the Japanese Ministry (Monbukagakusho-MEXT) for non-Japanese individuals living overseas.

Educational Support Association

Consists of students' guardians, supporting students by the following:

- ▶ Scholarships
- ▶ Career support
- ▶ Educational parent-teacher meeting
- ▶ Funding support for the graduation party
- ▶ International student support
- ▶ Development and maintenance of the educational environment

Support for students in their current and future endeavors

Contact

Kobe Design University
8-1-1 Gakuennishi-machi, Nishi-ku,
Kobe 651-2196, Japan

Tel: +81-78-794-2112 / Fax: +81-78-794-5027

E-mailinternational@kobe-du.ac.jp

Website (Japanese).....www.kobe-du.ac.jp

Website (English).....english.kobe-du.ac.jp